

气动吸盘
Pneumatic Vacuum Glass Lifter Sucker



技术参数/Technical Parameters

型号	RSY-FZ350/450	Model	RSY-FZ350/450
工作重量	350/450KG	Operating weight	350/450KG
工作角度	翻转90°	Work range	Tilting 90°
垂直升降行程	1200mm	Vertical lifting range	1200mm
气动元件	日本SMC	Pneumatic components	SMC(Japan)
吸盘数量	4/6	Sucker cup qty	4/6
吸盘材质	硅胶	Sucker material	Silica gel

功能: 主要适用于卧式玻璃深加工设备上片、钢化炉上下片、双边机的上下片、卧式钻孔机上下片等搬运工序。
Features: mainly applied to horizontal slice up and down, toughened glass processing furnace, bilateral machine up and down, up and down horizontal drilling machine such as the lower handling process.



气动吸盘
Pneumatic Vacuum Glass Lifter Sucker



技术参数/Technical Parameters

型号	RSY-FXZ350/450	Model	RSY-FXZ350/450
工作重量	350/450KG	Operating weight	350/450KG
工作角度	翻转旋转90度	Work range	Tilting & Rotating 90°
垂直升降行程	1200mm	Vertical lifting range	1200mm
气动元件	日本SMC	Pneumatic components	SMC(Japan)
吸盘数量	4/6	Sucker cup qty	4/6
吸盘材质	硅胶	Sucker material	Silica gel

功能: 适用于所有的玻璃深加工设备上片搬运工序。
Function: Suitable for all glass deep processing equipment.



气动吸盘

Pneumatic Vacuum Glass Lifter Sucker



直边机吸盘 (交叉型、H型)
Sucker of straight edge machine (cross type, H type)



小推车吸盘
Trolley sucker



180°旋转吸盘气缸
180°rotating glass sucker



伸缩扶手吸盘
Adjustable handle glass sucker



180°翻转吸盘
180°tilting glass sucker



气动180°旋转吸盘
Pneumatic 180°rotating glass sucker



弯钢吸盘 (横、竖)
Bending glass sucker (horizontal, vertical)



金属木料定制吸盘
Customization glass sucker for metal and wood



合片房吸盘
Laminated glass delicate sucker

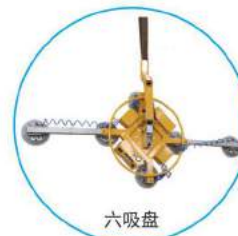
电动吸盘

Electrical Glass Lifter Sucker

电动吸盘X型 Electrical Glass Lifter Sucker(X)



四吸盘



六吸盘



八吸盘



1. 外形轻巧、操作简单
2. 12V电池驱动, 无需连接外接电源
3. 可根据玻璃尺寸, 加装加长杆
4. 可手动翻转90°; 手动旋转360°
5. 机械、数显气压及数显电池电量
6. 全封闭外壳保护, 更适合室外幕墙安装使用
7. 配有真空不足报警及断电保压及报警装置
8. 意外断电后, 保压功能可延长紧急处理时间, 使用更安全。
9. 可根据客户要求, 加装遥控装置。

1. Light and compact, easier operation.
2. Work with 12V battery, no need to connect external power.
3. Manual tilting 90° and rotating 360° with spring lock positioning.
4. Digital vacuum pressure display and LCD battery volume display.
5. Sealed cover for components protection, suited for outdoors use.
6. Low pressure alarm with acoustic and light.
7. When power cut off, pressure maintains give you time to emergency react, keep safe.
9. Remote control devices can be installed according to customer requirements

技术参数/Technical Parameters

型号 (Model No.)	RSY-X4	RSY-X6	RSY-X8
承载重量 (Load Capacity)	500kg	600kg	800kg
吸盘个数 (Suction qty)	4	6	8
翻转及旋转方式 (Tilt & Rotation type)	手动 (handle)		
翻转角度 (Tilt angle)	90°		
旋转角度 (Rotation angle)	360°		
可选配置 (Optional Configuration)	加长杆 (Extension rod) / 遥控器 (Remote control)		

电动吸盘 Electrical Glass Lifter Sucker

电动翻转电动旋转 Electrical Tilting & Rotating

本产品为大型玻璃幕墙室外安装设计,设备具备电动翻转和旋转功能;设备具有断电保护及真空不足报警功能,使用更安全,并可加装遥控远程控制,更适合高层室外玻璃幕墙安装,我公司可更具客户要求制作适应各种版面及重量的吸盘。

Designed for Jumbo glass,mainly suitable for outdoor screen installation and outdoor jumbo glass movement,it has rotating and reversal function.(customer also could choose single rotating and reversal function);the machine has power-off protection and alarm function for lack of vacuum.Make use safely,meanwhile could add telecontrol device,suitable for the glass in top outdoor screen.



电动翻转手动旋转 Electrical Tilting & Manual Rotating

适用于大版玻璃的取放和翻转,电动翻转90°,手动旋转360°,结构简单,操作方便。

It is suitable for big size of glass for turnover and pick-and-place,electrical turnover 90°,handle rotation 360°,structure easy,convenient operation.



技术参数/Technical Parameters

参数	型号	电动翻转电动旋转	电动翻转手动旋转	Parameter	Model	H-Electrical Glass Lifter Sucker	Hydraulic Glass Lifter Sucker
适用范围		室外幕墙安装、室内大版玻璃搬运等工序,具有旋转翻转功能。		Function		Mainly suitable for outdoor screen installation and indoor large-glass movement,it has rotating and tilting function	
工作电压		DV48V AC380V(可配选)		Operating Voltage		DV48V AC380V (Selectable)	
电池续航		15-20小时		Battery Life		15-20Hours	
载重量		1000-1500kg	800-1300kg	Operating Weight		1000-1500kg	800-1300kg
垂直旋转		电动旋转360°	手动旋转360°	Rotating		Electric Rotating360°	Hand Rotating360°
卧式旋转		电动翻转90°		Turn over		Electric tilting 90°	
控制方式		手动/遥控		Control fashion		Handle/Remote control	
功能		真空泵		Specialty		Vacuum Pump	
真空系统		电压表,断电保护15分钟不落功能;气压表,气压不足报警功能。		Vacuum System		Voltmeter,15minutes off power protection function; The barometer,insufficient pressure alarm function.	
供气源		电动真空泵压缩空气6-8帕		Air supply		Electrical Vacuum pump compressed air 6-8pa	
吸盘个数		10、14(可定做)	8、10、12(可定做)	Sucker No.		10、14(customize)	8、10、12(customize)
起吊方式		外挂至吊卸工具上		Lifting way		Plugins to crane unloading tools	

电动吸盘 Electrical Glass Lifter Sucker

液压电动翻转旋转 Hydraulic Electrical Tilting & Rotating

适用于超大版超重的玻璃,通过液压站提供翻转旋转的动力,操作稳定,动力强劲。

It is suitable for jumbo glass,which provides the power to rotate through the hydraulic station,stable operation and strong power.



一字手动翻转旋转 Line Type Manual Tilting & Rotating

一字式吸盘专为小型玻璃设计的一款室内外都可以使用的电池驱动式玻璃真空吸盘吊具,设计轻巧灵活,特别适合3.5米长,1.5米宽以内的门窗等玻璃的安装及加工上料。

Line type sucker with battery can be suitable for small size of glass indoor and outdoor,design and lighter.It is suitable for door and window glass within length 3.5 meter and wide 1.5 meter.



超大电动吸盘 Super Large Electric Sucker



超大中空双夹吸盘(气动型、电动型) Super Large Hollow Double Clamp Sucker (Pneumatic and Electric)



移动立柱吸盘

Mobile Column Vacuum Glass Lifter



适合在多工位间移动工作，操作灵活方便，可配旋转翻转吸盘多工位使用。
Suitable for multi-station mobile work, flexible and convenient operation, can be equipped with rotating flip chuck multi-station use.
最大承重200KG，总高度4100，轨道长度3000。
The maximum bearing weight is 200KG, the total height is 4,100, and the track length is 3,000.

电动旋臂起重机

Electric Slewing Crane



根据用户需要特殊设计的专用起重设备，具有结构新颖、合理、简单、操作使用方便、电葫芦电机自动行走、双键升降、360°电动旋转、作业空间大等优点，是节能高效的物料吊运装备，我公司可生产1T-3T起重设备，可配合电葫芦和玻璃吸盘设备进行工作。
Special lifting equipment specially designed according to the needs of users, with novel structure, reasonable, simple, Easy to operate, electric hoist motor automatic walking, double key lifting, 360° electric rotation, work Large space and other advantages, is energy saving and efficient material lifting equipment, our company can produce 1T-3T starting Heavy equipment, can work with electric hoist and glass sucker equipment.

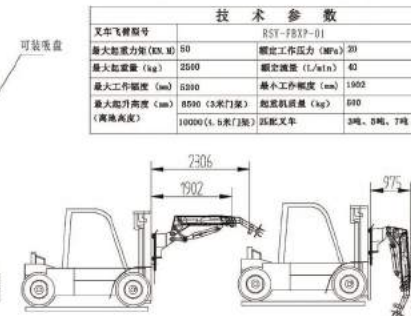
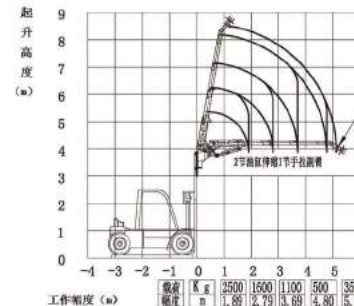


飞臂吸盘

Flying Arm Vacuum Glass Lifter Sucker



二节液压伸缩臂，一节手拉副臂，长度5.2米，可配备电动翻转旋转吸盘，电池容量48AH。适用于室外大版玻璃安装，操作灵活方便。
Two hydraulic telescopic arms, one hand holding auxiliary arm, length of 5.2m, can be equipped with electric flip rotating suction cup, battery capacity 48AH. Suitable for outdoor large glass installation, flexible and convenient operation.



技术参数	
叉车飞臂型号	RST-FBXP-01
最大起重量 (kg)	50
额定工作压力 (MPa)	20
最大起重量 (kg)	2500
额定速度 (L/min)	40
最大工作幅度 (mm)	5200
最小工作幅度 (mm)	1500
最大起升高度 (mm)	8500 (9米门架)
额定载质量 (kg)	500
(离地高度)	10000 (1.5米门架)
适配叉车	3吨、5吨、7吨

夹层玻璃生产线合片专用吸盘

Laminated Glass Dedicated Sucker

技术参数/Technical Parameters

型号/Model	PSX-LM1350-450
工作重量/Operating weight	350kg, 450kg
吸盘数量/Sucker No.	4, 6, 8
垂直升降行程/Vertical lifting range	500mm可根据客户需求定制 500 (customized)
工作气源/Air supply	0.6-0.8Mpa
工作角度/Work Angle	可360°旋转, 前、后、左、右移动 Rotating 360°
功能/Function	主要用于夹层玻璃生产线合片工序, 合片精准, 比传统的板式吸盘吊具合片快3倍。 Mainly used in laminated glass production line, fast speed and precise work.



龙门架式真空吸盘 Portal-Frame Shape Vacuum Glass Sucker



技术参数/Technical Parameters

型号	RSY-LMJ350-4, 450-4	Model	RSY-LMJ350-4, 450-4
工作重量	350kg, 450kg	Operating weight	350kg, 450kg
工作角度	翻转旋转90度	Work range	Tilting, rotating 90°
垂直升降行程	1200mm	Vertical lifting range	1200mm
工作气源	0.6-0.8Mpa	Air supply	0.6-0.8Mpa
吸盘数量	4, 6个	Sucker No.	4/6
优点	覆盖面积大, 受力比悬臂吊均匀, 做超大版玻璃灵活轻便。	Advantage	Larger coverage, power equality, suitable for large glass and easy to use.
功能	适用于夹层玻璃生产线、钢化玻璃生产线、中空玻璃生产线、磨边机、装卸玻璃等工序。	Function	Mainly used in laminated glass production line, tempered glass, hollow glass, glass edge grinding machine, loading and unloading glass ect.

旋转型立柱式真空吸盘 Column-shape Vacuum Lifter Sucker



立柱式

墙壁式

工字钢式

技术参数/Technical Parameters

型号	RSY-XZ250/350/450-2/4	Mode	RSY-XZ250/350/450-2/4
工作重量	250, 350, 450 (kg)	Operating weight	250, 350, 450 (kg)
工作角度	旋转90度	Work range	Rotating 90°
吸盘数量	2, 4, 6	Sucker cup qty	2/4/6
功能	主要用于中空玻璃生产线、立式钻孔机、单边磨等上下片的搬运工序。	Function	Mainly used for glass loading offloading in insulated glass line, vertical drilling machine, single line glass edging machine

新X-02双磨头磨边机 New X-02 Double Head Edge Grinding Machine



技术参数/Technical Parameters

型号 Model	RSY-NX-02
功率 Power	3.1KW
外形尺寸 Overall size	2800*1250*1270 (mm)
适应厚度 Adaptive thickness	3mm-12mm
最小加工尺寸 Minimum processing size	300*300 (mm)
最大加工尺寸 Maximum processing size	2000*2000 (mm)



Model	RSY-NX-02
Power	3.1KW
Overall size	2800*1250*1270 (mm)
Adaptive thickness	3mm-12mm
Minimum processing size	300*300 (mm)
Maximum processing size	2000*2000 (mm)

本磨边机是我公司第六代磨边机,采用四边磨边原理及结构,磨轮可前后调节,能满足不同规格玻璃的磨边需要。磨轮可使用市场通用的金刚石和树脂轮,更换速度快,使用时间长,磨边效果细腻,磨边后不崩边,钢化自爆率低。可正面或侧面连线清洗机直接清洗。且该机具有水式除 Low-E 膜装置,两侧的活动平台可根据边需要任意折叠。可根据客户要求,加装磨底边装置。

This is the sixth generation edging grinding machine of our factory. Using quads sharpen edges principle and structure, with a buffer device, grinding wheel can be move around to meet the various specifications' grinding needs. Grinding wheel use diamond wheels, has fast changing, long using time, exquisite edge grinding effect, reduce tempered glass destruction rate characteristics. Can attach positive or side wash machine for the glass cleaning directly. The attached two platforms can be folded or unfolded based on the glass's size. Water type low-e coat removal equipment or bottom grinding device are available, can be attached with your request.

RSY-08A多功能磨边机 RSY-08A Multifunctional Edge Grinder

技术参数/Technical Parameters

型号 Model	RSY-08A
功率 Power	2.3KW
玻璃厚度 Glass thickness	3mm-12mm
机器外形尺寸 Overall dimensions	2840*1250*850 (mm)
最小加工尺寸 Minimum processing size	280*280 (mm)
最大加工尺寸 Maximum processing size	2000*2000 (mm)



1. Better grinding speed and effect than quad-edge grinding machine. Better than double-edge grinding machine in grinding complicated, single and irregular glasses.
2. Put glass continuously even for different specification without manual adjustment and attention.
3. Connect the glass washing machine from front and side, making one-step-to-reach from grinding to washing, thus saving manpower and time. No interference with connected machines or devices.
4. This machine completely gets rid of the disadvantages of some devices such as rough grinding and explodes easily when glass is put in high temperature stove, or secondary debris scratches. It can finish irregular grinding movement to straight, round, triangle or wavy edge.

1. 对加工玻璃圆角,汽车挡风玻璃尤为适用。
2. 不同规格的玻璃可连续上片,无需人工调整和等待。
3. 本机可侧正、面连线清洗机,使玻璃从磨边到洗片一步到位,节约人力和时间,并且不妨碍原有连线的四边磨等机械设备。
4. 本机解决了玻璃在加工时所带来的磨边粗糙、入高温炉易裂、二次碎屑划伤等问题。轻松快速完成直边、圆边、三角形、波浪形等异形磨边。

X-09磨边机 X-09 Edge Grinding Machine

技术参数/Technical Parameters

型号 Model	RSY-X09
功率 Power	1.6KW
外形尺寸 Overall size	2000*1100*1050 (mm)
最小加工尺寸 Minimum processing size	300*300 (mm)
最大加工尺寸 Maximum processing size	1500*900 (mm)



X-09磨边机是基于02磨边机的简易款,适合中小型玻璃加工企业的粗磨需求。该机操作简单,效率高,磨边效果细腻,钢化自爆率低。自带水循环,整机小巧、轻便。可正面或侧面连接清洗机,针对玻璃规格不等的加工订单,不用长时间调校磨边机,从而达到提高效率,减少成本的效果。

The X-09 glass grinding machine is the simplified version of our X-02 grinding machine. It suits medium and smaller glass factory's grinding needs. It's easy operate, with high efficiency, fine grinding effect and low self-detonation rate. Build-in water circulation, the machine is small and light. It can connect glass washing machine on the side or front. For varies glass sizes, easy to adjust the machine, therefore improve the working efficiency and reduce production cost.

水式砂带机 Water Type Belt Machine



水式砂带机 (A款) Water Type Belt Machine(A)

该机自带水循环系统,工作时避免灰尘飞扬;主机采用304不锈钢材质焊接,重量轻、美观耐用;平台表面采用喷涂工艺处理,杜绝生锈;特制的聚氨酯万向轮可确保玻璃不会划伤;气动控制阀可同步快速更换砂带;主机和工作平台可随意拆卸组合,带万向轮的工作平台可多工位使用。

The machine has a built-in water circulation system which avoids the flying dust during the operation; the main engine is welded with 304 stainless steel, it thus has a light weight and durability; in addition, it is also quite pretty. The surface of the platform is coated to prevent rusting. The special polyurethane universal wheels ensure that the glass will not be scratched; the pneumatic control valve can change the sanding belt at synchronously and quickly; the main engine and the working platform can be assembled and disassembled quietly easily the working platform with universal wheels can be used in multiple work stations.



水式砂带机 (C款) Water Type Belt Machine(C)

该机为A款的升级产品。在具有A款功能的基础上,在平台上加装了靠轮,使玻璃在磨边时可直线通过,倒角的磨削量规整统一;在主机上增加偏心轮装置,既能调节砂带位置、张紧度,也能适当调整玻璃磨削角度。This is the upgraded version of water type belt machine A. Based on type A machine, the type C machine adds depend wheel, keep the glass in the straight line in grinding process, and keep the grinding chamfer neat or orderly. The machine also add eccentric wheel on the mainframe, not only adjust the position of the abrasive belt and degree of tightness, also the grinding angle.

技术参数/Technical Parameters

型号 Model	RSY-5DMBJ03A	RSY-5DMBJ03C
主机外观 Host appearance	700*700*1300 (mm)	700*700*1300 (mm)
功率 Power	1.6KW	1.6KW
平台外观 Platform appearance	2200*1200 (mm)	2200*1200 (mm)
最小加工尺寸 Minimum processing size	200*200 (mm)	200*200 (mm)
最大加工尺寸 Maximum processing size	2000*2000 (mm)	2000*2000 (mm)

经典式叉车吊臂
Classic Forklift Truck Crane Arm



可配合吊杆吊带等做货物的装卸、移位。
It can cooperate with the Glass belt and glass hanging bar to do the goods loading,unloading and displacement.



高度:2.6m 前臂长:2m 宽度:920mm

底座式叉车吊臂
Base Forklift Truck Crane



高度:3m 前臂长:1.45m 底座:1.3*1.3m

对于货叉使用率比较高的地方,该吊臂不用频繁装卸货叉,可直接插入使用,玻璃靠住底座架后,在不人扶的情况下可做远距离移位。

This equipment suitable for forklift and crane dismounting frequently. It can insert the forklift easily and keep stable when holding the glass and moving it.



吊杆置顶式叉车吊臂
Hanging Bar Set-top Forklift Truck Crane Arm



高度:2600mm 臂长:2000mm

该吊臂可以在库门或车间矮小的地方,进行装卸移位。
Suitable for loading and unloading displacement in warehouse doors or short workshops.



新式叉车吊臂
New-style Forklift Truck Crane Arm



该吊臂来自欧美设计理念,使用材质加大加厚,并对承重部位做出三角形支撑,对于超重型物尤其适用。
The crane arm is from western design concept,the use of the material increased thickening,and the bearing parts to make triangle support,especially applicable for super-heavy goods.



高度:2.7m 前臂长:2m

双臂式叉车吊臂
Double-jib Forklift Crane Jib

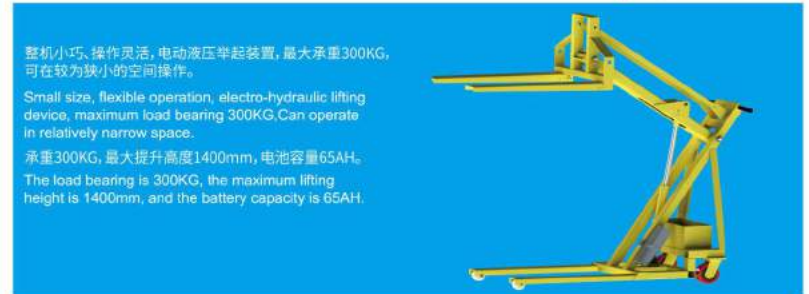


该吊臂采用双吊臂组合形式,承重力更强,受力更均匀,结构更安全,适用于超大版玻璃吊卸。

This crane jib employs the double-jib combination form,it can bear a heavier weight in a more balanced way,the structure is safer,marking it suitable for lifting and unloading of jumbo size glass.



液压叉车
Hydraulic Forklift



整机小巧、操作灵活,电动液压举升装置,最大承重300KG,可在较为狭小的空间操作。

Small size, flexible operation, electro-hydraulic lifting device, maximum load bearing 300KG.Can operate in relatively narrow space.

承重300KG,最大提升高度1400mm,电池容量65AH。

The load bearing is 300KG, the maximum lifting height is 1400mm, and the battery capacity is 65AH.



U型吊臂

Glass Container Unloading Tool (with crane)



U型吊臂广泛用于玻璃厂车间、车站、码头、远洋货运等集装箱吊运玻璃的场所。此装置可轻松吊20英尺普柜、高柜的大小版玻璃。不需要两台大吨位叉车混合作业。此设备不会造成玻璃的破损，不需要拖拉木箱，不损坏集装箱体，装卸成本低，安全可靠。可结合天车、吊车使用，既能充分利用场地，又不受场地限制。产品分为A/B两款，B款可装卸大小版面玻璃；A款可装卸大版玻璃。

The Glass container unloading tool (with crane) is widely used unloading glass cases form 20 feet container in glass factory, warehouse, wharf and so on. The tool work with crane and more safety and efficiently.

技术参数/Technical Parameters

型号	RSY-UDB-02	RSY-UDB-01	Model	RSY-UDB-02	RSY-UDB-01
起重量	2700kg	2700kg	Lifting weight	2700kg	2700kg
上臂长	8850mm	7500mm	Arm length	8850mm	7500mm
下臂长	6000mm	6000mm	upper arm length	6000mm	6000mm
工作范围	适应大小版玻璃装卸	适应大版玻璃装卸	Lower arm length	Suitable for big size glass	Suitable for big size or small size glass



叉车串杆

Glass Container Unloading Tool (with forklift)



技术参数/Technical Parameters

型号	RSY-CCCG-01	Model	RSY-CCCG-01
起重量	2700kg	Lifting weight	2700kg
臂长	6000mm	Arm length	6000mm
自重	900kg	Dead load	900kg
工作范围	适应大小版玻璃装卸	Working range	

叉车串杆是专业装卸集装箱玻璃的工具，其购置费用低廉，不需要对叉车进行任何改动即可安装，能适应大小版玻璃的装卸，充分发挥叉车性能优势，突破场地区域限制，随时作业。本产品具有结构合理，操作方便，工作效率高，免维护等优点。

Forklift pole is a professional tool for loading and unloading container glass. It can be installed without any modification to the forklift at low cost. It can adapt to loading and unloading of large and small plates of glass, give full play to the performance advantages of forklift, break through the limitation of site and area, and operate at any time. This product has the advantages of reasonable structure, convenient operation, high working efficiency and maintenance free.

